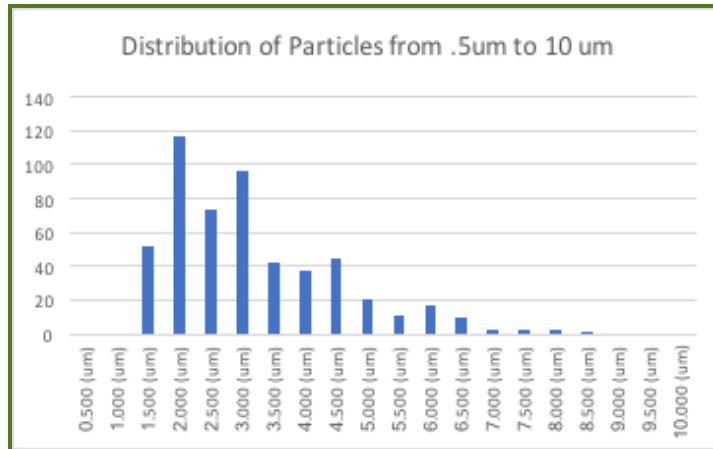
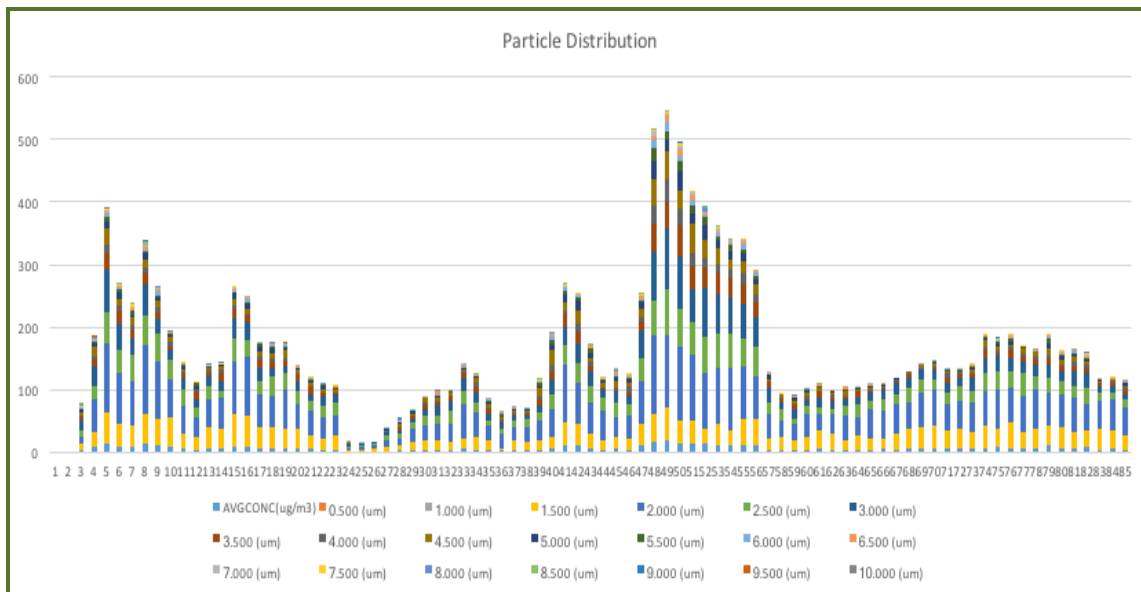


The following chart is of a single sample showing the particle distribution over the entire range from .5um to 10um. In this example most, particles fall into the 1.5um to 5um range.



The following graph shows all dust samples over the entire shift. In each vertical bar different colors represent different sizes of dust. The colours start from the smallest particle at the bottom of the bar to the largest particle at the top of the bar.



Single sample showing particle count from .5um to 10um. Colors show number of particles at different sizes

The spikes in dust at various times of the day can be seen.

CONCLUSIONS

Particle distribution can be a valuable tool to determine the various health risks facing a worker. It can also be used to determine the presence and concentration of a specific engineered particle in the air.