

DUSTCOUNT PERFORMANCE ANALYSIS

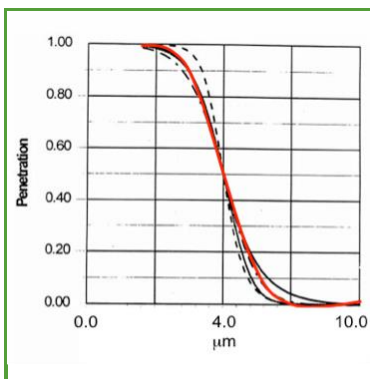
OVERVIEW

The DustCount is a real-time Personal Wearable Particle Monitor that provides the features required to support real-time personal aerosol monitoring.

The product combines the advantages of real-time dust monitoring with the ability to do the standard method all in a compact, lightweight package.

INPUT CURVE

The input curve of an aerosol monitor must meet the standard for the dust fraction that it is measuring. The following graph shows the comparison of the DustCount with the standard NIOSH curve.

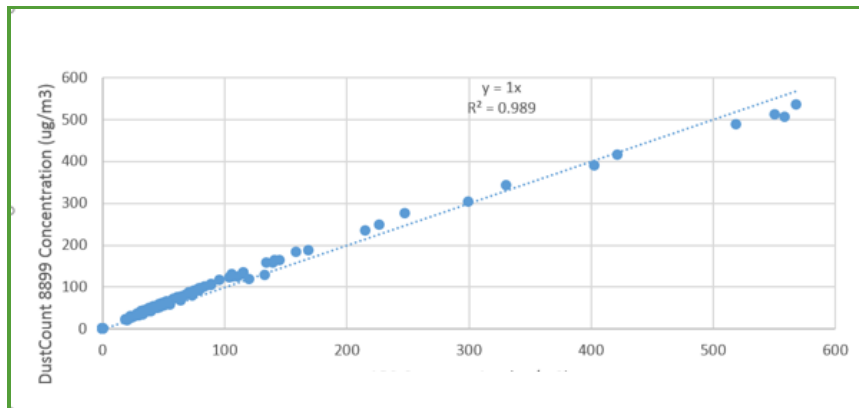


ISO/ACGIH/CEN – 1995, reference P.A. Baron (NIOSH/DART)

The DustCount tracks the NIOSH curve to within the required 5% envelope at any point on the curve.

STRAIGHT LINE CONCENTRATION PERFORMANCE

In this test the DustCount is tested at a fixed respirable particle size with varying concentrations as measured by an industry standard, highly accurate lab test device.

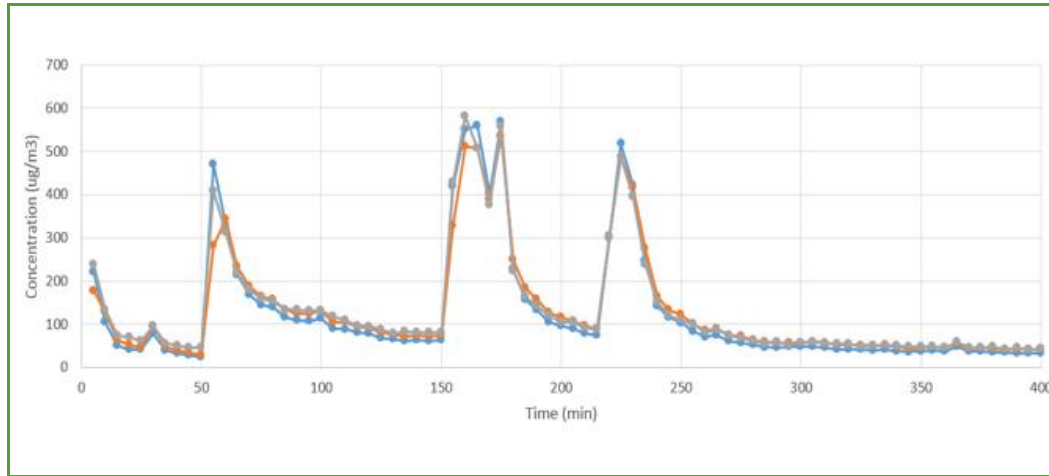


The DustCount product shows close correlation to the performance of the highly accurate Lab Test device.

Copyright 2019 Nanozen Industries Inc. All rights reserved. Information subject to change without notice.

VARYING CONCENTRATION PERFORMANCE

Next the DustCount is tested under varying concentrations over time at slow changing rates and fast changing rates side by side with 2 other highly accurate real-time dust monitors.



The above graph outlines the DustCount performance is very close to the other industry standard Dust Monitors.